

## Light efficiency:

**98 Lumen/Watt**

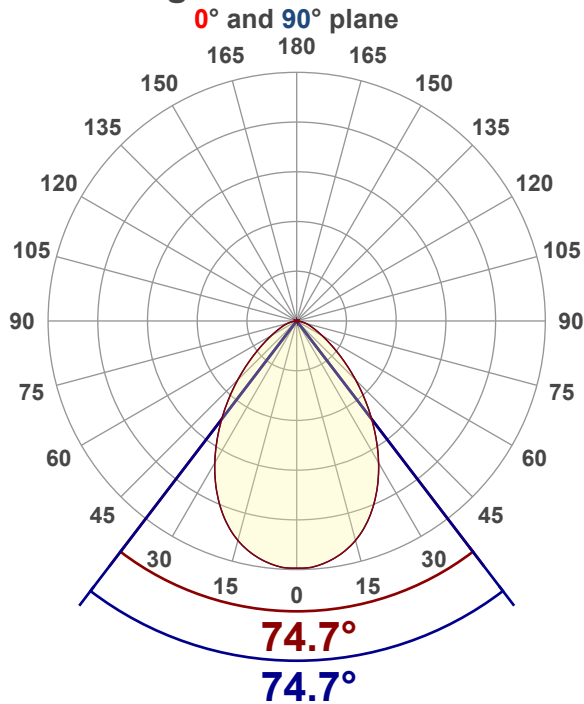
## Color temperature:

**4154 K**

## Light quality:

**CRI:96.2, R<sub>g</sub>:91.5, R<sub>f</sub>:100.0****P: 2 / V: - / F: 2****Output: 1057 lm****Peak: 662 cd****Power: 10.8 W****Voltage: 120 V****Current: 0.092 A****PF: 0.98****THD: 8.36 %**

## Angular Distribution



Product name:

**SLMB4-12W-CCT-XX - 4000K**

Test Date:

**11/21/2025**

Beam Angle (50% of the brightness of the centre):

**74.7°**

Field Angle (10% of the brightness of the centre):

**124.7°**

Cut Off Angle (2.5% of the brightness of the centre):

**157.3°**

## Beam Details

\*measured at centre of beam

Mounting Height (feet)\(meter)	Lux*	Footcandles*	Beam width (feet) / (meter)
4 ft / 1.2 m	446 lx	41 fc	6.1 ft / 1.9 m
8 ft / 2.4 m	111 lx	10 fc	12.2 ft / 3.7 m
12 ft / 3.7 m	50 lx	5 fc	18.3 ft / 5.6 m
16 ft / 4.9 m	28 lx	3 fc	24.4 ft / 7.4 m
20 ft / 6.1 m	18 lx	2 fc	30.5 ft / 9.3 m

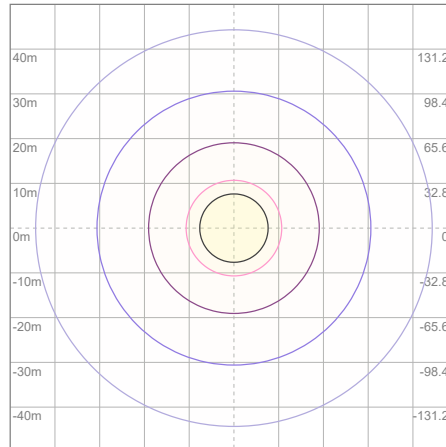
Beam center

# Photometric Testing Report

## Zonal Lumen Summary

Zone	Lumen	%Luminaire
0-30	465	43.99%
0-40	692	65.47%
0-60	969	91.67%
60-90	87.2	8.25%
70-100	32.5	3.07%
90-120	0.166	0.02%
0-90	1056	99.91%
90-180	0.605	0.06%
0-180	1057	100.00%

## ISO Lux Diagram



Lux at center:	71 lx
3%	2.13 lx
5%	3.55 lx
10%	7.10 lx
30%	21.30 lx
50%	35.50 lx

**Conditions:**  
Number of planes: 8  
Lux distribution on a surface when lamp is mounted at 3.05 meters from the surface.

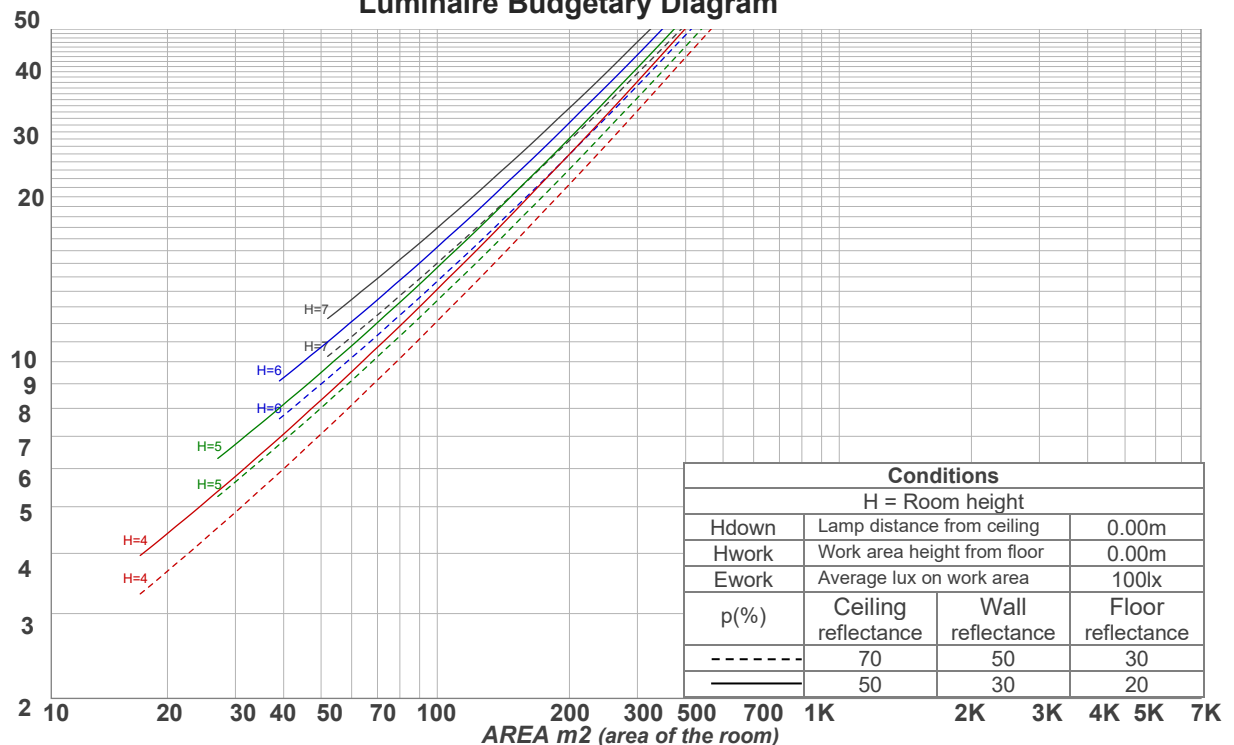
Mounting height: 3.05 meters (10 feet)

## Coefficients of Utilization

Ceiling reflectance	80				70				50			30			10			0
Wall reflectance	70	50	30	10	70	50	30	10	50	30	10	50	30	10	50	30	10	0
Floor reflectance	20	20	20	20	20	20	20	20	20	20	20	20	20	20	20	20	20	0
RCR	(RCR: Room Cavity Ratio) Room Values are expressed as percentage of Lumens delivered to the task surface																	
0	119	119	119	119	116	116	116	116	111	111	111	106	106	106	102	102	102	100
1	111	108	104	101	109	105	102	100	101	99	97	97	95	94	94	92	91	89
2	103	97	91	87	101	95	90	86	92	88	84	89	85	82	86	83	80	78
3	96	88	81	76	94	86	80	75	83	78	74	81	76	73	78	75	71	69
4	89	80	72	67	87	78	72	66	76	70	65	74	69	65	72	67	64	62
5	83	73	65	59	81	72	64	59	70	63	59	68	62	58	66	61	57	56
6	78	67	59	53	76	66	58	53	64	58	53	62	57	52	61	56	52	50
7	73	61	54	48	71	60	53	48	59	53	48	58	52	48	56	51	47	46
8	68	57	49	44	67	56	49	44	55	48	44	54	48	44	53	47	43	42
9	64	53	45	40	63	52	45	40	51	45	40	50	44	40	49	44	40	38
10	61	49	42	37	60	49	42	37	48	41	37	47	41	37	46	41	37	35

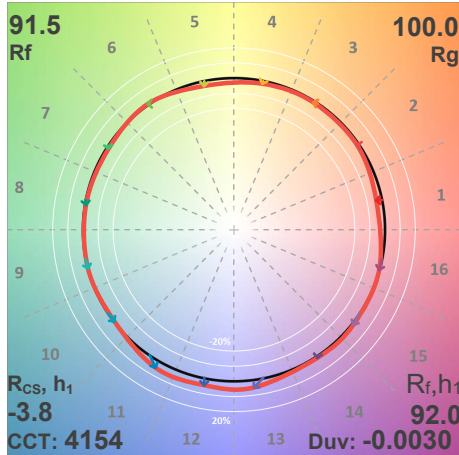
LAMPS (number of lamps)

## Luminaire Budgetary Diagram

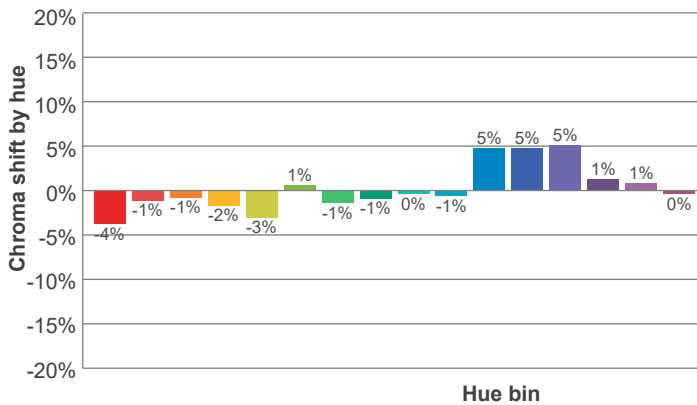
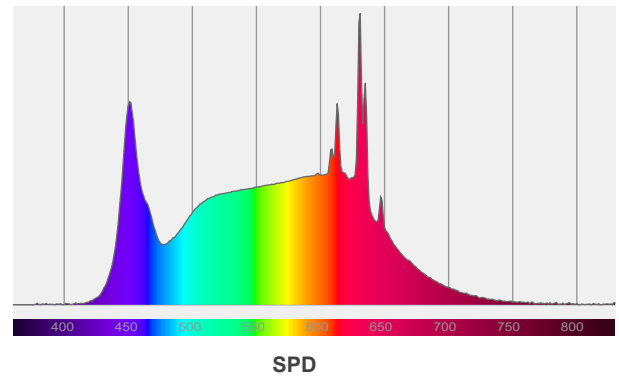
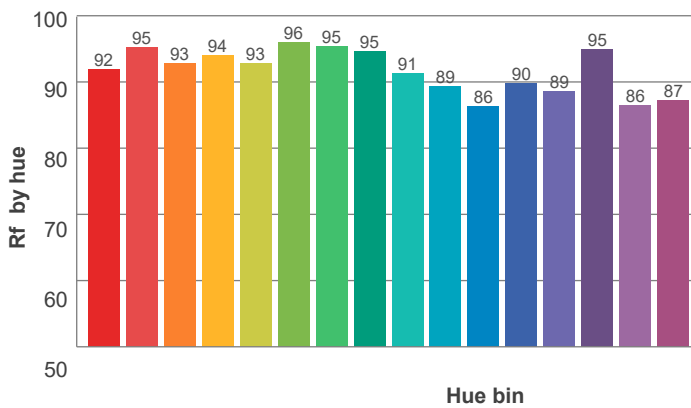
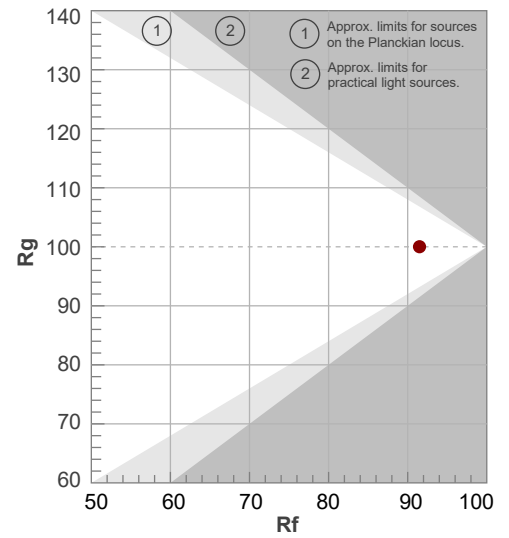


ANSI/IES TM-30-18

P: 2 / V: - / F: 2



Hue Bin	R <sub>f</sub>	Shifts (%)	
		Chroma	Hue
1	92	-4%	0%
2	95	-1%	1%
3	93	-1%	3%
4	94	-2%	0%
5	93	-3%	1%
6	96	1%	1%
7	95	-1%	2%
8	95	-1%	3%
9	91	0%	6%
10	89	-1%	7%
11	86	5%	8%
12	90	5%	1%
13	89	5%	-7%
14	95	1%	-1%
15	86	1%	-8%
16	87	0%	-7%



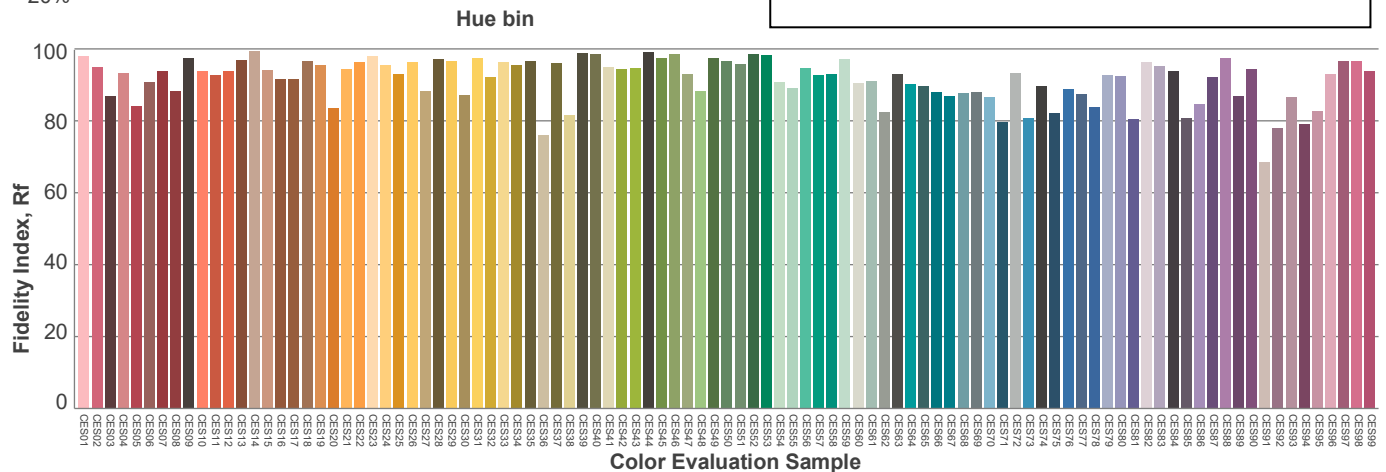
Red: 23.9%, Power=3.8mW

Blue: 16.2%, Power=9.5mW

Green: 30.3%, Power=14.0mW

UVA: 0%, Power=0.0mW

Dominant Wavelength: 583nm

1<sup>st</sup> Peak Wavelength: 631nm2<sup>nd</sup> Peak Wavelength: 451nm

### Glare Evaluation According to UGR

p Ceiling		70	70	50	50	30	70	70	50	50	30
p Walls		50	30	50	30	30	50	30	50	30	30
p Floor		20	20	20	20	20	20	20	20	20	20
Room size X      Y		Viewing direction at right angles to lamp axis					Viewing direction parallel to lamp axis				
2H	2H	25.0	25.9	25.1	26.2	26.4	25.0	25.9	25.1	26.2	26.4
	3H	25.4	26.4	25.8	26.6	26.8	25.4	26.4	25.8	26.6	26.8
	4H	25.6	26.6	26.0	26.8	27.1	25.6	26.6	26.0	26.8	27.1
	6H	25.8	26.7	26.1	26.9	27.3	25.8	26.7	26.1	26.9	27.3
	8H	25.8	26.6	26.2	27.0	27.4	25.8	26.6	26.2	27.0	27.4
	12H	25.8	26.6	26.2	26.9	27.4	25.8	26.6	26.2	26.9	27.4
4H	2H	25.1	26.0	25.5	26.3	26.5	25.1	26.0	25.5	26.3	26.5
	3H	25.8	26.6	26.2	27.0	27.4	25.8	26.6	26.2	27.0	27.4
	4H	26.1	26.8	26.5	27.2	27.8	26.1	26.8	26.5	27.2	27.8
	6H	26.3	27.0	26.8	27.4	27.7	26.3	27.0	26.8	27.4	27.7
	8H	26.4	27.0	26.9	27.4	27.7	26.4	27.0	26.9	27.4	27.7
	12H	26.4	26.9	26.9	27.3	27.8	26.4	26.9	26.9	27.3	27.8
8H	4H	26.2	26.8	26.7	27.2	27.6	26.2	26.8	26.7	27.2	27.6
	6H	26.5	27.0	27.0	27.4	28.0	26.5	27.0	27.0	27.4	28.0
	8H	26.6	27.0	27.1	27.5	28.2	26.6	27.0	27.1	27.5	28.2
	12H	26.6	27.0	27.2	27.5	28.1	26.6	27.0	27.2	27.5	28.1
12H	4H	26.1	26.7	26.6	27.1	27.6	26.1	26.7	26.6	27.1	27.6
	6H	26.5	26.9	27.0	27.4	28.1	26.5	26.9	27.0	27.4	28.1
	8H	26.6	27.0	27.2	27.5	28.1	26.6	27.0	27.2	27.5	28.1
Variation of the observer position for the luminaire distance S											
S = 1.0H		0.3 / -0.6					0.3 / -0.6				
S = 1.5H		1.1 / -1.3					1.1 / -1.3				
S = 2.0H		2.1 / -2.0					2.1 / -2.0				
Standard table		n/a					n/a				
Correction summand		n/a					n/a				
Corrected glare indices referring to 1057 lm total luminous flux											